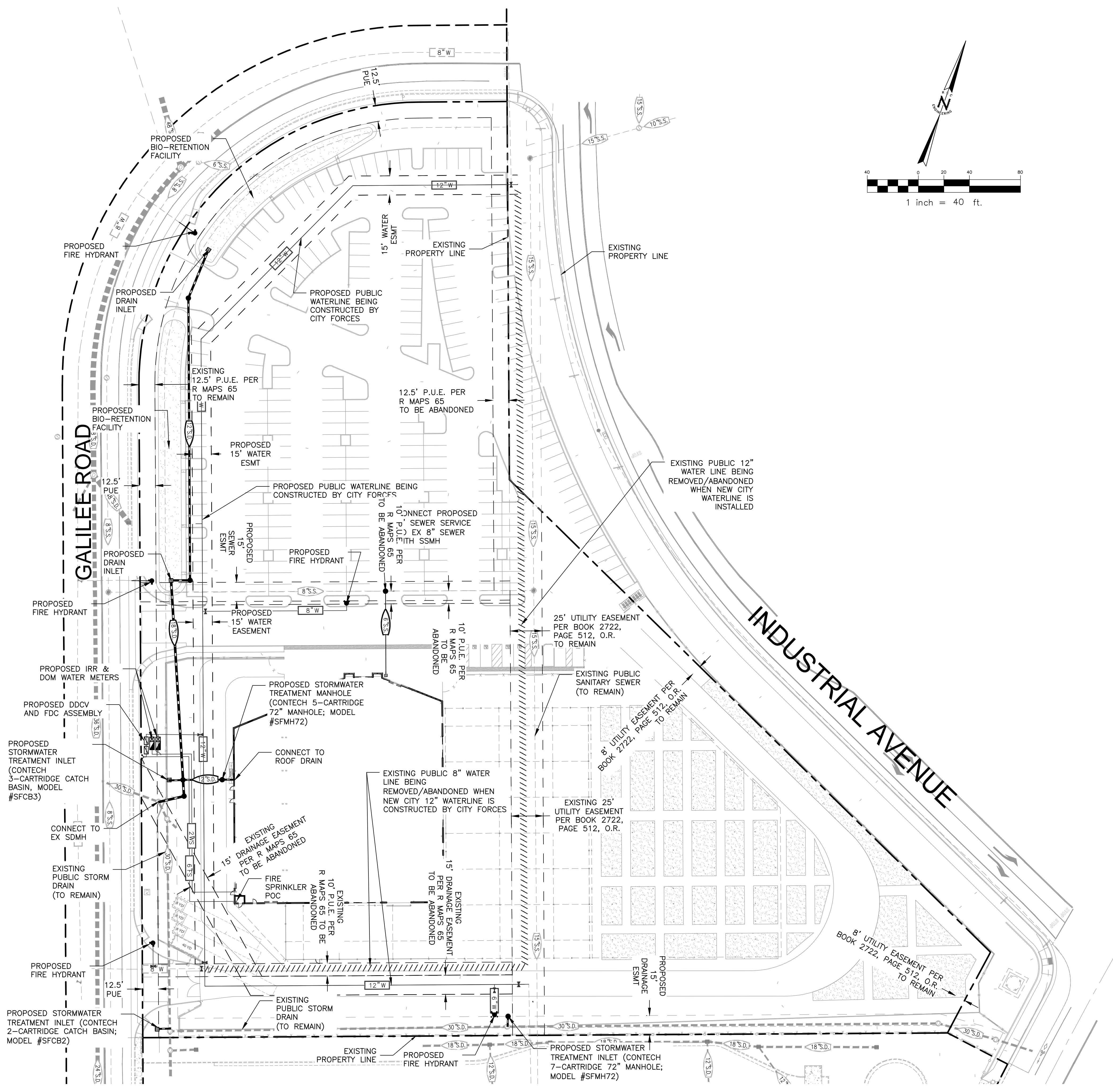
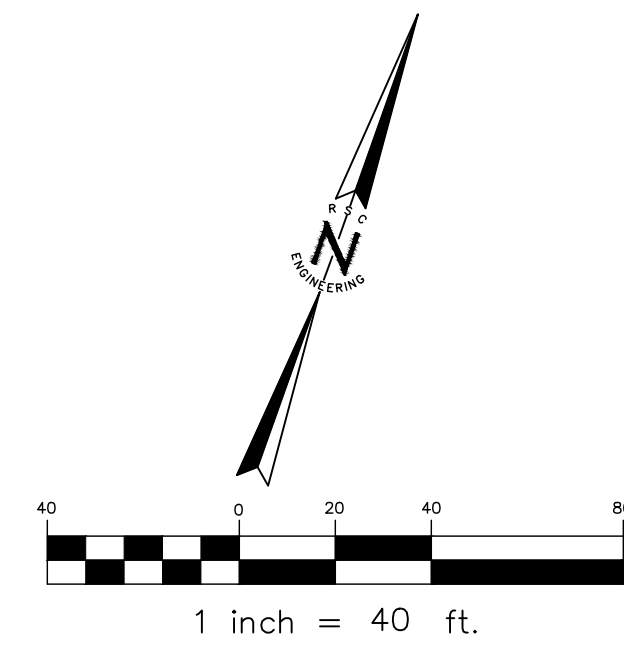


LEGEND

- PROPOSED SANITARY SEWER
- EXISTING SANITARY SEWER
- PROPOSED STORM DRAIN
- EXISTING STORM DRAIN
- PROPOSED WATER LINE
- EXISTING WATER LINE
- PROPOSED WATER VALVE
- EXISTING WATER VALVE
- PROPOSED FIRE PROTECTION ASSEMBLY
- PROPOSED FIRE HYDRANT
- EXISTING FIRE HYDRANT
- PROPOSED R.P. BACKFLOW PREVENTOR
- PROPOSED SANITARY SEWER MANHOLE
- EXISTING SANITARY SEWER MANHOLE
- PROPOSED SANITARY SEWER CLEANOUT
- EXISTING SANITARY SEWER CLEANOUT
- PROPOSED STORM DRAIN MANHOLE
- EXISTING STORM DRAIN MANHOLE
- PROPOSED STORM DRAIN INLET
- EXISTING STORM DRAIN INLET



GREEN ACRES NURSERY & SUPPLY PRELIMINARY UTILITY PLAN

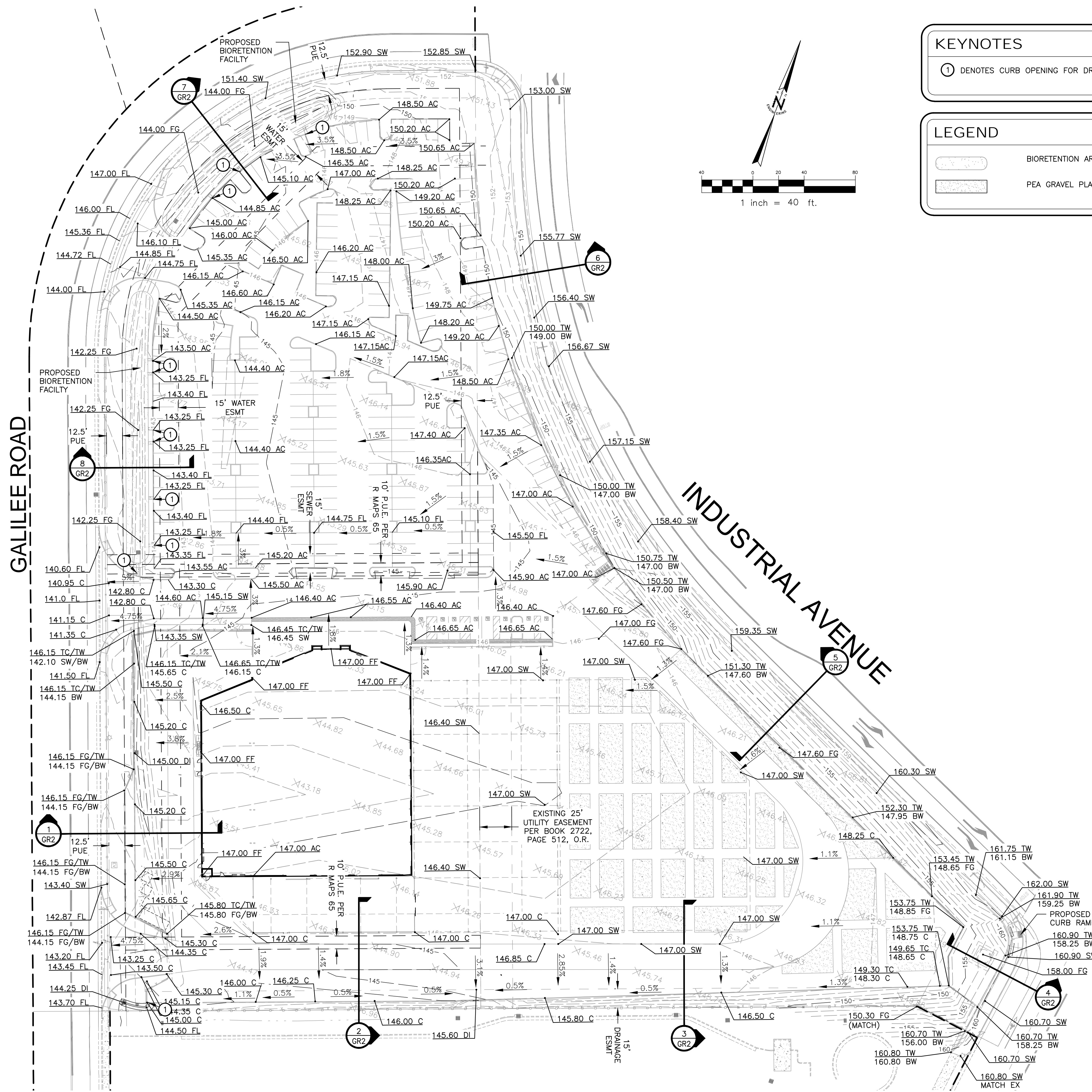
7300 GALILEE ROAD, ROSEVILLE, CALIFORNIA 21001-02

05-27-2021

1478 STONE POINT DRIVE SUITE 350 ROSEVILLE, CA 95661 T | 916 782 7200 borgesarch.com

UT1





KEYNOTES	
①	DENOTES CURB OPENING FOR DRAINAGE

LEGEND	
	BIORETENTION AREA
	PEA GRAVEL PLANTING BED

GREEN ACRES NURSERY & SUPPLY PRELIMINARY GRADING PLAN

7300 GALILEE ROAD, ROSEVILLE, CALIFORNIA 21001-02

05-27-2021

1478 STONE POINT DRIVE SUITE 350 ROSEVILLE, CA 95661 T | 916 782 7200 borgesarch.com

GR1



